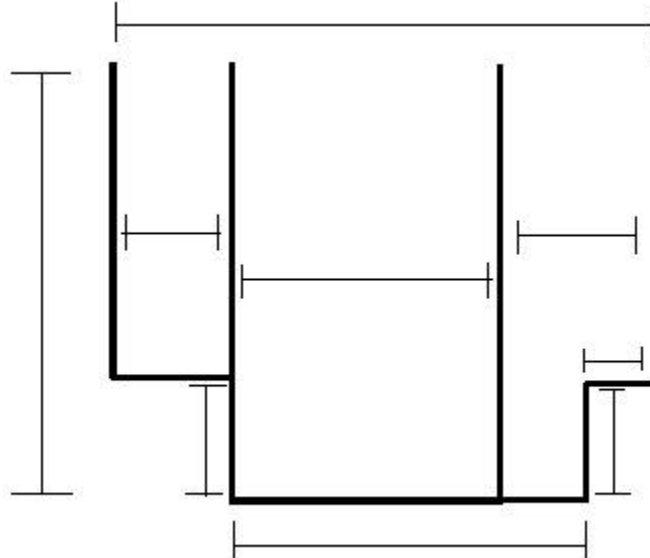


HOW TO MEASURE FOR A SWING OUT DOOR WITH 2 INLINE PANELS, WITH KNEEWALL AND/OR NOTCH PANEL/S



IMPORTANT: ONLY USE FINISHED CENTERLINE DIMENSIONS.

MEASURE OVERALL WIDTH FROM FINISHED WALL TO FINISHED WALL.

PROVIDE OVERALL WIDTH OF NOTCHED PANEL, WIDTH OF NOTCH (Width of Notch not to be less than 5"), AND HEIGHT OF NOTCH.

IF THE OTHER INLINE PANEL IS ON A KNEEWALL, PROVIDE PANEL WIDTH.
IF THE OTHER INLINE PANEL IS FULL HEIGHT, PROVIDE OVERALL DOOR
PANEL WIDTH (Door cannot be wider than 36" AND panel can't be less than 7").

MEASURE HEIGHT FROM TOP OF THRESHOLD TO
DESIRED OVERALL HEIGHT.

PROVIDE KNEEWALL HEIGHT BY MEASURING FROM TOP OF THRESHOLD
TO TOP OF KNEEWALL. DO NOT PROVIDE PANEL HEIGHT.

PROVIDE HINGE LOCATION
(LEFT OR RIGHT).