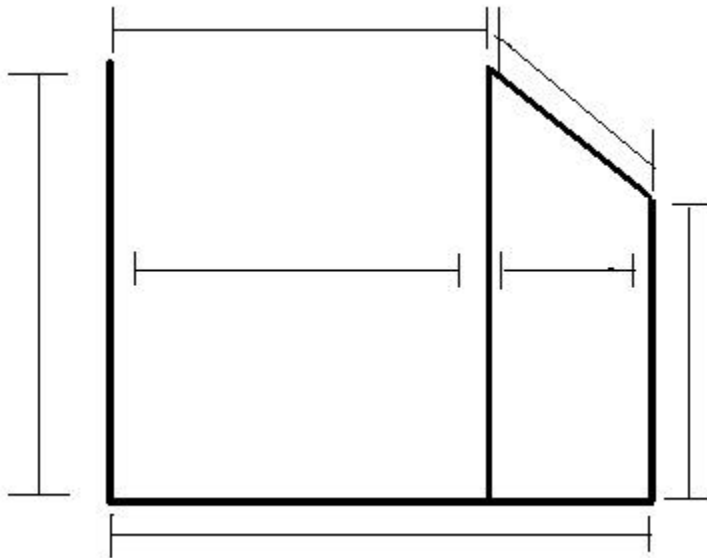


## HOW TO MEASURE FOR A BYPASS WITH SLOPED INLINE PANEL



**IMPORTANT:** ONLY USE FINISHED CENTERLINE DIMENSIONS.

MEASURE OVERALL WIDTH FROM FINISHED WALL TO FINISHED WALL AT TOP, MIDDLE, AND BOTTOM.

MEASURE BYPASS AND IN LINE PANEL WIDTHS SEPARATELY.

MEASURE DISTANCE OF SLOPE.

MEASURE HEIGHT FROM TOP OF THRESHOLD TO DESIRED OVERALL HEIGHT.

MEASURE HEIGHT FROM TOP OF THRESHOLD TO BEGINNING OF SLOPE.

### **NOTE: FOR STEAM APPLICATION...**

Only Pacer or Prestige framed bypass doors are available for steam. Showerhead location must be provided. Tripanels, frameless bypass, Tryton and Euro doors are not available for steam.